

TOWN PLACE AT DELRAY

BEING A REPLAT OF LOT 11, LESS THE NORTH 50 FEET, LOTS 12, 13, AND 14, LESS THE EAST 5 FEET, BLOCK 107, MAP OF THE TOWN OF LINTON, FLORIDA, KNOWN NOW AS THE TOWN OF DELRAY, AS RECORDED IN PLAT BOOK 1, PAGE 3, OF THE PUBLIC RECORDS OF PALM BEACH COUNTY, FLORIDA, SECTION 16, TOWNSHIP 46 SOUTH, RANGE 43 EAST CITY OF DELRAY, BEACH, PALM BEACH COUNTY, FLORIDA

JUNE 2002
SHEET 2 OF 2

COUNTY CLERKS CERTIFICATION

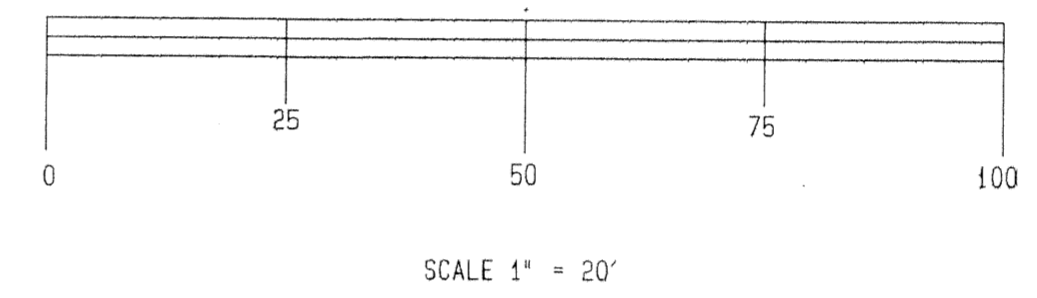
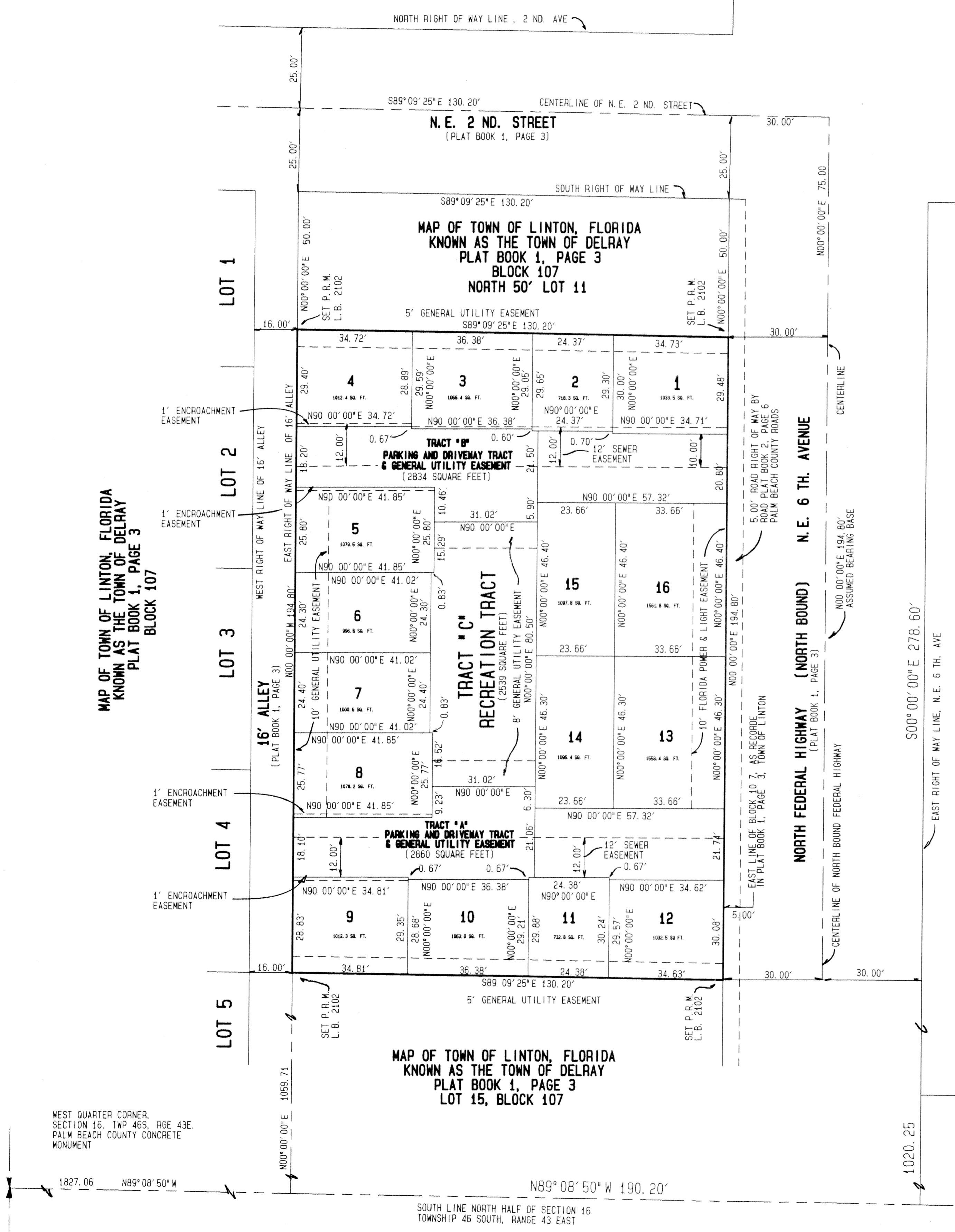
STATE OF FLORIDA
COUNTY OF PALM BEACH

THIS PLAT WAS FILED FOR RECORD
AT _____ THIS _____ DAY OF _____

RECORDED IN PLAT BOOK _____
ON PAGE _____

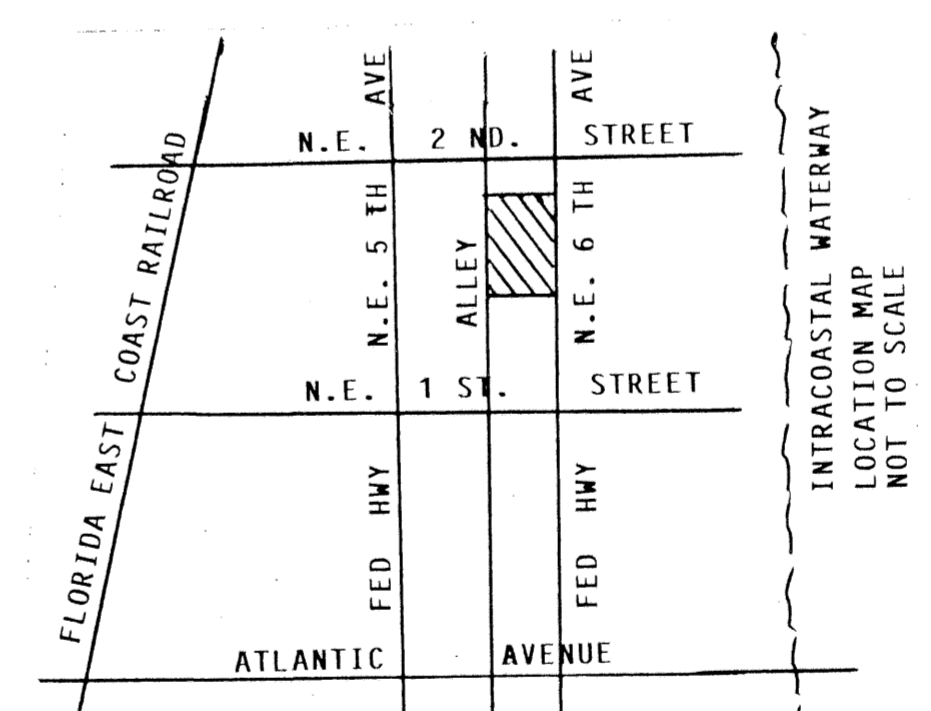
DOROTHY H. WILKEN
CLERK OF CIRCUIT COURT

BY: _____
DEPUTY CLERK



LEGEND:

- INDICATES PERMANENT REFERENCE MONUMENT, SET (L.B. 2102)
- INDICATES FOUND 5/8" IRON ROD, (NO. CAP)



WEST QUARTER CORNER,
SECTION 16, TWP 46S, RGE 43E,
PALM BEACH COUNTY CONCRETE
MONUMENT

1827.06 N89°08'50"W 190.20'

SOUTH LINE NORTH HALF OF SECTION 16
TOWNSHIP 46 SOUTH, RANGE 43 EAST

RENAISSANCE VILLAGE
PLAT BOOK 93, PAGE 11

LB 2102 Joe Tucker

LAND SURVEYORS

RICHARD L. SHEPHARD and Associates

219 S.E. 23RD AVENUE Phone: (561) 391-4388
P.O. BOX 758 Boca Raton (561) 391-4388
BOYNTON BEACH, FLORIDA 33435 Boynton (561) 737-6546
FAX (561) 734-7546